

Task: Sketch in transportation improvements based on your chosen 'preferred scenario'.
Use colors to identify your recommendations

Black - New Connections

(Typical spacing for collector roads is between 1/2 mile-1 mile; for local streets between 400-800 feet spacing creates a more walkable, neighborhood block)

Green - Transit opportunities

Blue - Bike Improvements

Highlighter - Walking Improvements (Identify, circle areas)

Red - Trouble areas, spot improvements

See examples below for ideas. Feel free to annotate what you like, don't like, or is missing.

AUTOMOBILE/ TRUCK TOOLKIT



- Driveways
- Medians
- On-street Parking
- Parking Structures
- Landscaped Buffers
- Lane Width
- Travel Speed

PEDESTRIAN TOOLKIT



- Lighting
- Outdoor Seating
- Trash Receptacles
- Trees & Awnings
- Landscaped Medians
- Sidewalks
- Crosswalk Markings
- Crosswalk Width
- Countdown Signals
- Curb Ramps
- Buildings & Doors

BICYCLE TOOLKIT

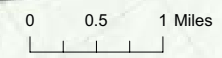
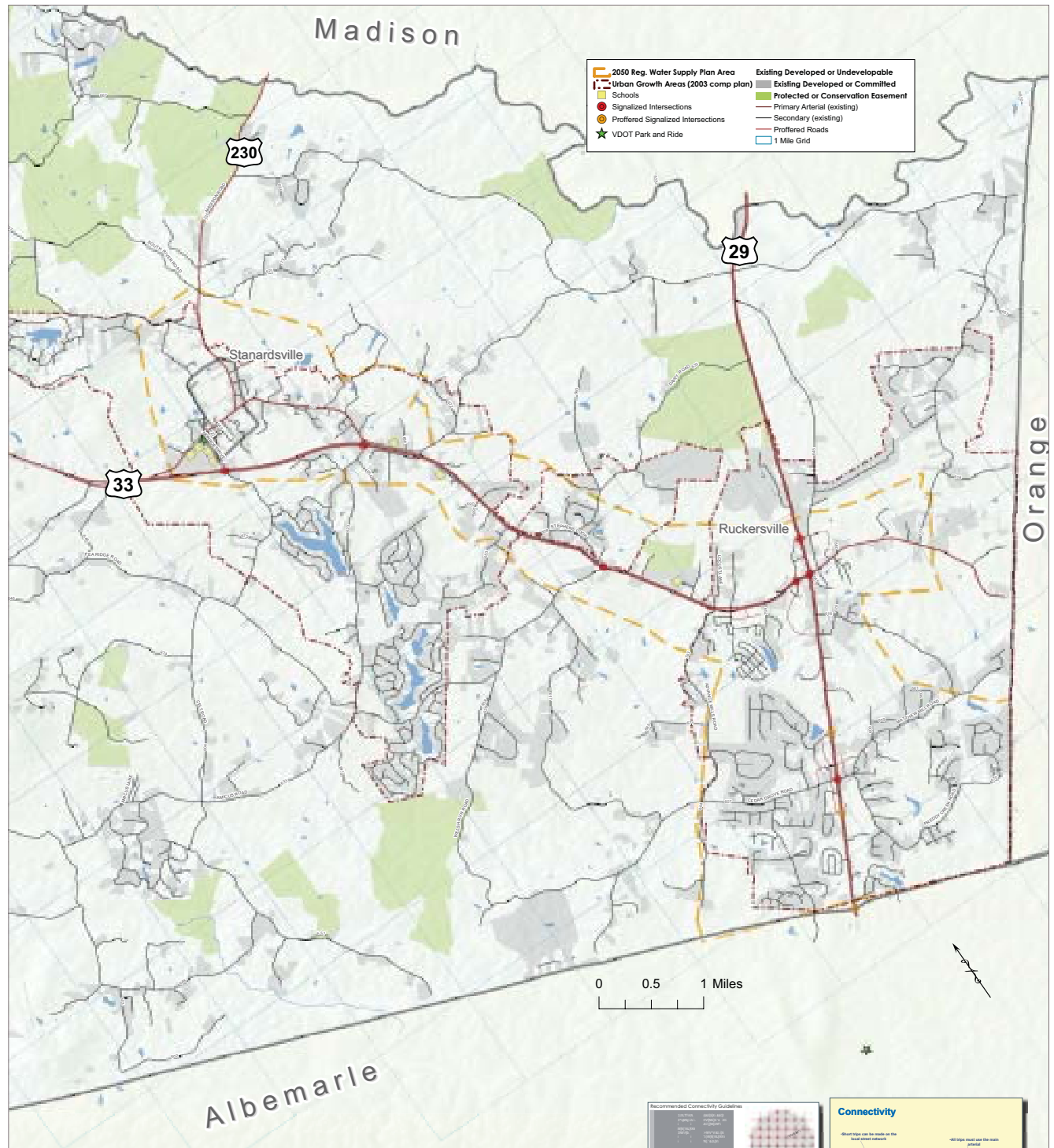
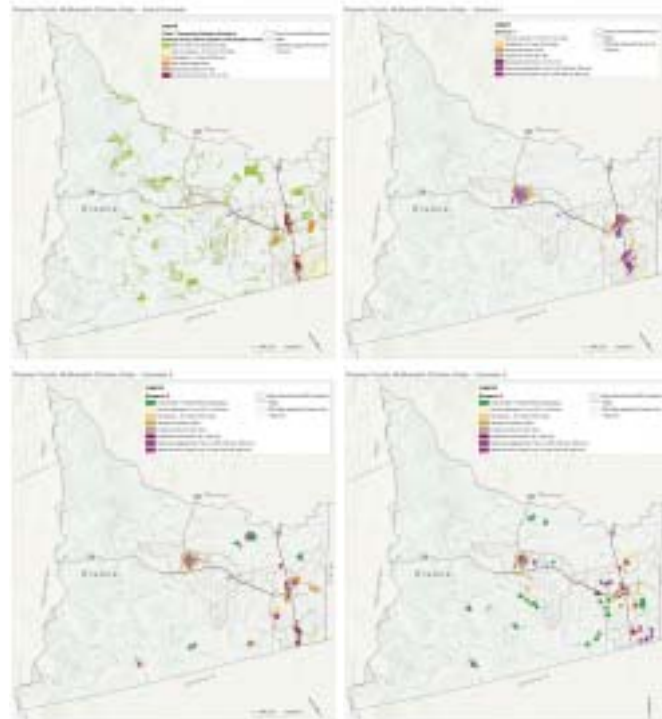


- Signage
- Roadway Markings
- Lanes
- Shoulders
- Bike Racks/Storage
- Vehicle Speed

TRANSIT TOOLKIT



- Shelters With Seating
- Sidewalk Connections
- Crosswalks
- Route Maps/ Signs
- Street Furniture
- Bicycle Racks



Recommended Connectivity Guidelines

- Primary Arterial: 1 mile grid
- Secondary Arterial: 1/2 mile grid
- Collector Road: 1/4 mile grid
- Local Street: 1/8 mile grid

Connectivity

Good connectivity: All types meet near the main point.

Poor connectivity: All types meet near the main point.

Orange

Albemarle